

Security - Monitor and VCR Mounts

APW offers a full line of CCTV enclosures and hardware. Created with the installer in mind, these products are designed for easy installation. All APW security products are manufactured to the highest quality standards, conforming to CCTMA EIA standards.

Our full line of "Installer Friendly" security enclosure solutions include:

- Camera housings (Environmental/Indoor)
- Camera mounts
- VCR lock boxes
- Security cabinets, racks, and consoles
- Monitor mounts
- VCR mounts



CEILING MONITOR MOUNTS

Item Number	Description	Support Plate Size		Monitor Size (in.)	Weight Capacity (lbs.)	Shipping Weight (lbs.)
		W (in.)	D (in.)			
MCM-2*	Extends 23.75" from ceiling	8.50	8.50	9.00	40	6
MCM-15*	Extends 24" from ceiling	16.00	12.00	15.00-17.00	90	15
MCM-19*	Extends 24" from ceiling,	22.00	12.00	19.00-21.00	90	18

* Specify color: "K"=Black "B"=Beige "W"=White

Example: MCM-15K



MM-12

WALL MONITOR MOUNTS

Item Number	Description	Support Plate Size		Monitor Size (in.)	Weight Capacity (lbs.)	Shipping Weight (lbs.)
		W (in.)	D (in.)			
MM-1*	Extends 8" from the wall	8.50	8.50	9.00-12.00	40	6
MM-12*	Extends 12" from the wall	10.00	12.00	12.00-14.00	65	9
MMH/D-15*	Heavy-duty Extends 13.875" from wall	15.50	12.00	15.00-17.00	100	18.
MMH/D-19*	Heavy-duty Extends 13.875" from wall	23.19	12.88	19.00-21.00	100	21
MMH/D-25*	Heavy-duty Extends 20" from wall	23.19	12.88	25.00-27.00	125	28

* Specify color: "K"=Black "B"=Beige "W"=White

Example: MMH/D-25K



MMH/D-25

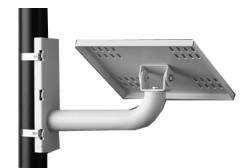
POLE MONITOR MOUNTS

Item Number	Description	Support Plate Size		Monitor Size (in.)	Weight Capacity (lbs.)	Shipping Weight (lbs.)
		W (in.)	D (in.)			
MM-1P*	Extends 8" from pole	8.50	8.50	9.00-12.00	40	8
MMH/D-15P*	Heavy-duty Extends 13.875" from pole	15.50	12.00	15.00-17.00	100	18
MMH/D-19P*	Heavy-duty Extends 13.875" from pole	23.19	12.88	19.00-21.00	100	21
MMH/D-25P*	Heavy-duty Extends 20" from pole	23.19	12.88	25.00-27.00	125	28

* Specify color: "K"=Black "B"=Beige "W"=White

Example: MMH/D-25PK

Note: When ordering any APW pole mount a clamp kit must also be ordered. (CP-10 or CP-100, see accessories)



MM-1P

PEDESTAL MONITOR MOUNTS

Item Number	Description	Support Plate Size		Weight Capacity (lbs.)	Shipping Weight (lbs.)	Weight Capacity (lbs.)
		W (in.)	D (in.)			
MPM-6*	Extends 7.75" from surface	8.50	8.50	9.00-12.00	40	7

* Specify color: "K"=Black "B"=Beige "W"=White

Example: MPM-6K

CEILING VCR MOUNTS

Item Number	Description	VCR Size		Shipping Weight (lbs.)
		W (in.)	H (in.)	
VCR-1418R*	VCR hanging mount attaches underneath the MCM-15 or 19	14.00	6.00	7

* Specify color: "K"=Black "B"=Beige "W"=White

Example: VCR-1418RK

WALL VCR MOUNTS

Item Number	Description	VCR Size		Shipping Weight (lbs.)
		W (in.)	H (in.)	
VCR-1418S*	VCR hanging mount attaches underneath the MMH/D-15 or 25	14.00	6.00	7 lbs.

* Specify color: "K"=Black "B"=Beige "W"=White

Example: VCR-1418SK



VCR-1418S shown with MMH/D-15

Application Tips

- All monitor mounts can rotate 360 degrees and adjust from a level position to an up and down position
- When ordering monitor pole mounts, a pole mount kit must also be ordered (CP-10 or CP-100, see security accessories section.)

